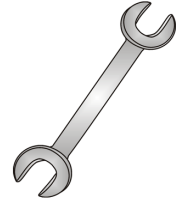




# Tow-Trust Towbars

Important: Please read General Notes overleaf before fitting



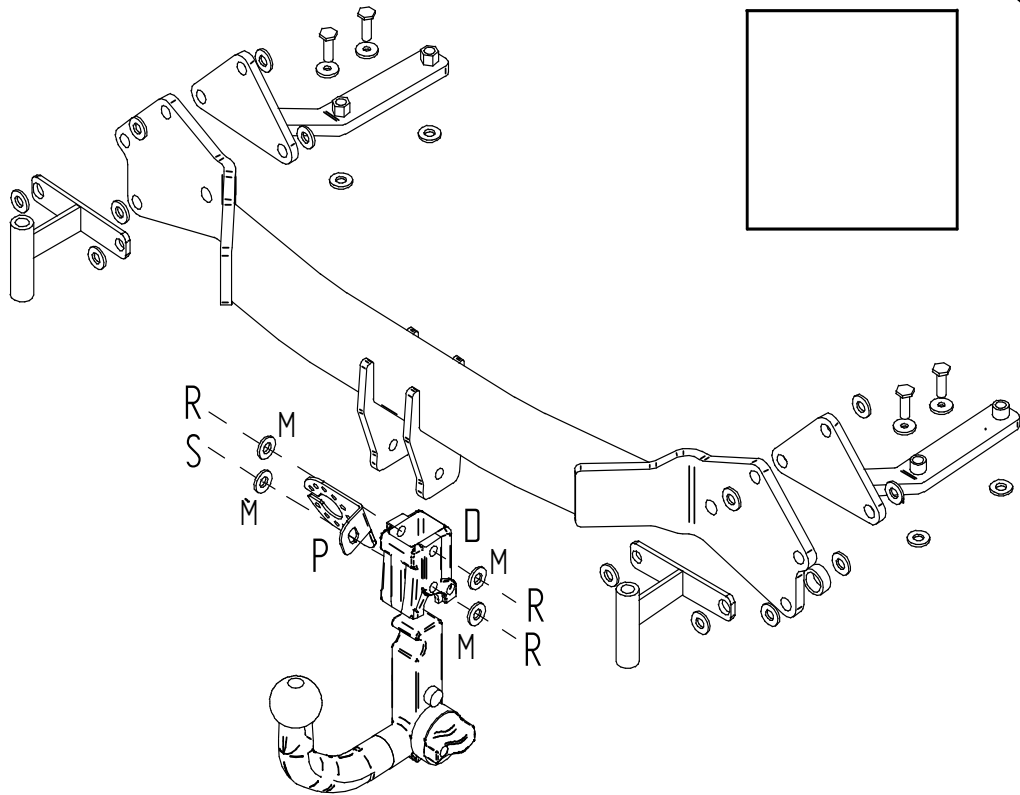
Issue 2

## TBM 907A BMW X5 E53 2001 - 2007

Item	Qty	Description	Item	Qty	Description
A	1	Crossmember	F	2	M16 x 50 Bolts Nuts & S/P Washers
B	2	Side Arms	G	6	M12 x 70 Bolts Nuts & S/P Washers
C	2	Handed Bumper Brackets	H	2	M12 x 50 Bolts, Nuts & S/P Washers
D	1	Extension bar	J	6	M12 x 40 Grade 10.9 Bolts & S/P Washers
E	2	30 x 12 Spacer Bushes	K	4	M10 x 25 Bolts & S/P Washers
			L	1	M12 x 100 Grade 10.9 Bolt & Nyloc Nut
			M	24	12 x 25 Flat Washers
			N	4	10 x 25 Flat Washers

1. Remove the rear bumper (one existing torx head bolt each side, four fixings along the top edge and two fixings around each wheel arch.)
2. Remove the bolts from the rearmost exhaust hanger and temporarily lower the exhausts. Temporarily lower the heat shield.
3. Remove the panel from the boot floor, trays from each side and side panels.
4. Remove the three M8 nuts each side securing the bumper supports.
5. Remove the two plastic bungs in the lower face of each chassis member.
6. Locate item **B** into each chassis and loosely bolt using Item **J** with Item **M**.
7. Using Item **G** with Item **M** loosely bolt Item **A** through existing holes in the rear panel and also through each side arm.
8. Using the lower hole in Item **A** as a jig, drill 13mm holes through the rear panel.
9. Locate Item **E** between Item **A** and the rear panel and using Item **H** with Item **M** bolt into place.
10. From inside the boot locate the two captive nuts each side along each chassis member (these are covered with tape) secure using Item **K** with Item **N**.
11. Using Item **L** with Item **M** and Item **J** with Item **M** bolt Item **D** to Item **A**.
12. Fully tighten all nuts and bolts and ensure the towbar is rigid and secure.
13. Refit exhaust hanger, heat shield and rear bumper.
14. Cut a section from the bumper insert 85mm wide into the existing hole and replace over the towbar.
15. Using Item **F** bolt the ball bracket and wiring plate (not supplied in this kit) to the mounting plate.

**Note:** nose load limits and vehicle manufacturer's trailer / caravan weight limits must be observed.



# TBM 907A VK

# TBM 907A

