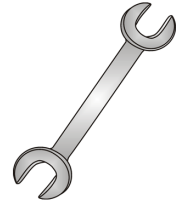




Tow-Trust Towbars

Important: Please read General Notes overleaf before fitting



Issue 2

TH4 HONDA CR-V

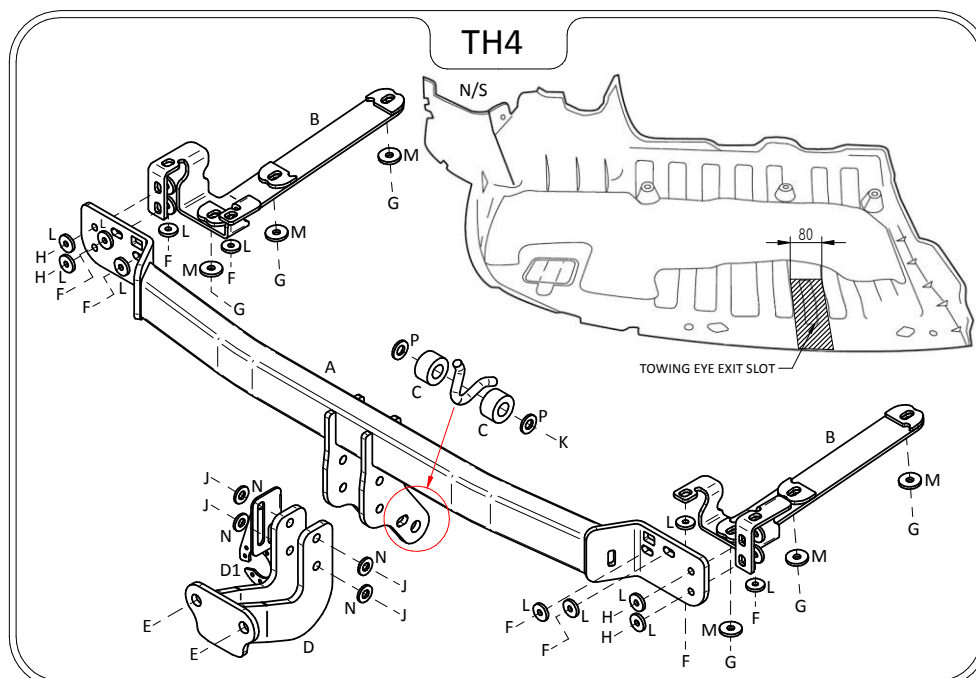
Item	Qty	Description	Item	Qty	Description
A	1	Crossmember	E	2	M16 x 50 Bolts, Nuts & S/P Washers
B	2	Handed Side Arms	F	8	M8 x 35 Bolts & S/P Washers
C	2	40 O/D x 23 Spacer Tubes	G	6	M10 x 35 x 1.25 Bolts & S/P Washers
D	1	Extension	H	4	M8 x 40 Bolts, Nuts & S/P Washers
D1	1	L/H Socket Plate (VASP8/LH)	J	4	M12 x 40 Bolts & Nyloc Nuts
			K	1	M16 x 100 Bolt & Nyloc Nut
			L	16	8 x 25 Flat Washers
			M	6	10 x 30 Flat Washers
			N	4	12 x 25 Flat Washers
			P	2	16 x 27 Flat Washers
			Q	2	M16 Bolt Caps

BUMPER REMOVAL:

1. First remove the six fixings securing the rear under tray and remove from vehicle.
2. Gently unclip the wheel arch trim to reveal five fixings, locate and remove, remove three fixings from the bumper lower edge.
3. Open the tailgate and remove the four fixings around the boot opening.
4. Carefully remove the rear bumper disconnecting any wiring if fitted. Remove rear crash beam. (Beam is not refitted with the Towbar assembly).

TOWBAR INSTALLATION:

1. Using Item F with item L fix the crossmember (Item A) to the rear panels M8 captive threads.
2. Using Item K with Item P and Item C fix Item A to the central Towing eye.
3. Using the two holes either end of Item A as jigs drill straight through the rear panel with 10mm drill and paint the raw steel to prevent rust.
4. Remove the two vertical M8 bolts either side of vehicle found in front of the rear panel at either end of each chassis member.
5. Using Item G with Item M fix each side arm (Items B) to each correct chassis.
6. Using Item F with Item L fix each side arm (Items B) to the vertical M8 captive threads.
7. Using Item H with Item L fix Item A to Items B sandwiching the rear panel between each part.
8. Using Item J with Item N fix the Extension (Item D) to Item A.
9. Using Item E fix your desired ball bracket and wiring plate (not supplied in this kit) to the face plate.
10. Fully tighten all nuts and bolts ensuring Towbar is rigid square and secure.
11. Cut the under tray as shown in sketch and refit along with the rear bumper.



Note:

1. Recommended Torque Setting for M12 Grade 10.9 -139 Nm. (For other Torque Settings see notes overleaf.)
2. Nose load limits and vehicle manufacturers trailer / caravan weight limits must be observed.