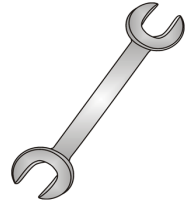




Tow-Trust Towbars

Important: Please read General Notes overleaf before fitting



Issue 3

**TR8 RENAULT MASTER VAN RWD 2010>
VAUXHALL MOVANO VAN RWD 2010>
NISSAN NV400 RWD 2011>
(SINGLE & TWIN REAR WHEEL) (WITH & WITHOUT STEP)**

Item	Qty	Description	Item	Qty	Description
A	1	Crossmember	E	2	M16 x 60 Bolts & Nyloc Nuts
B	2	Handed Side Arms	F	12	M12 x 45 Bolts, 2 Nyloc Nuts & 10 S/P Washers
C	1	Coupling Spacer	G	10	12 x 40 Flat Washers
D	2	Spacers (Twin Rear Wheel Only)	H	2	12 x 25 Flat Washers

1. First remove the brackets from each chassis member, three fixings on the N/S chassis member, and two fixings on the O/S chassis member. **NOTE:** if vehicle is fitted with a step there will be two fixings connecting these brackets to the vehicles step brackets, **RETAIN THESE BOLTS.**
2. Locate all Towbar mounting points and ensure threads and mating faces are all clean and free from any under seal.
3. Using Item **F** and Item **G** loosely bolt Item **A** to the underside of the vehicle.
4. Using Item **F** and Item **G** bolt Items **B** to each correct chassis depending on vehicle spec (single or twin rear wheel SEE SKETCH).
5. Using Item **F** with Item **H** bolt Items **B** to Item **A**. **NOTE:** Twin rear wheel models require Item **D** to be fitted between Items **B** and Items **A**.
6. Using Item **E** bolt your desired ball bracket (not supplied in this kit) and Item **C** to Item **A**.
7. Fully tighten all nuts and bolts ensuring Towbar is rigid and secure.
8. **Models fitted with step.** Using the original bolts, bolt step to the mounting point located on each end of Item **A**.

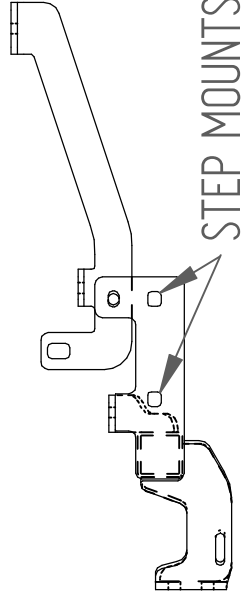
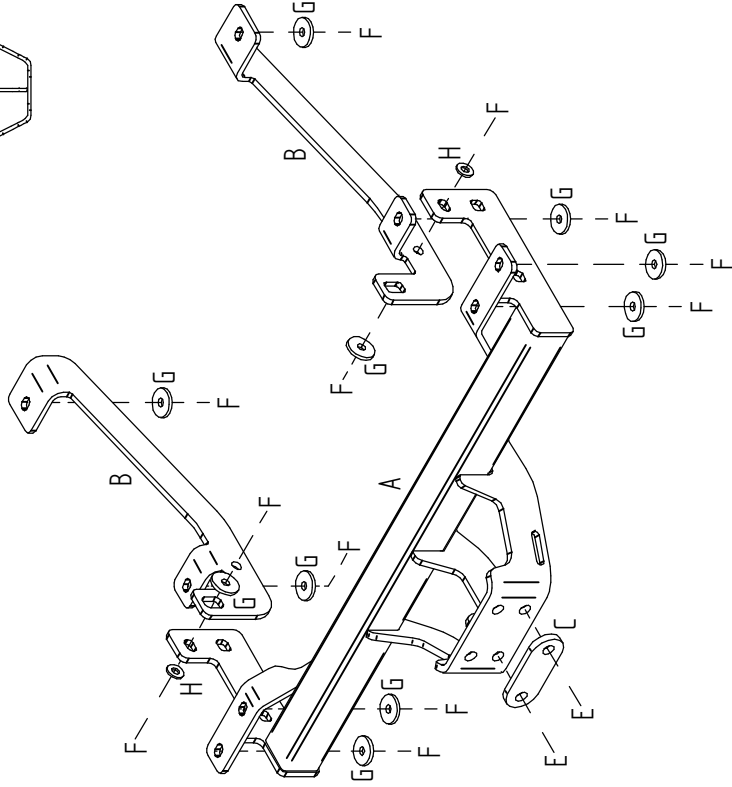
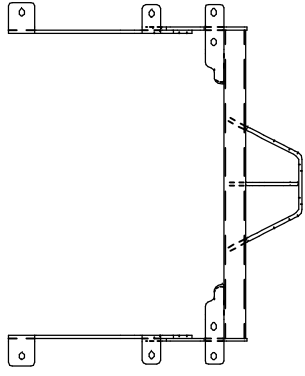
Note:

1. Recommended Torque Setting for M12 Grade 10.9 -139 Nm. (For other Torque Settings see notes overleaf.)
2. Nose load limits and vehicle manufacturers trailer / caravan weight limits must be observed.

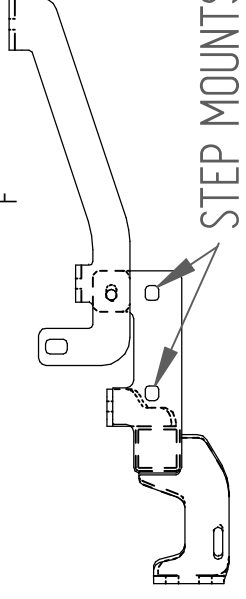
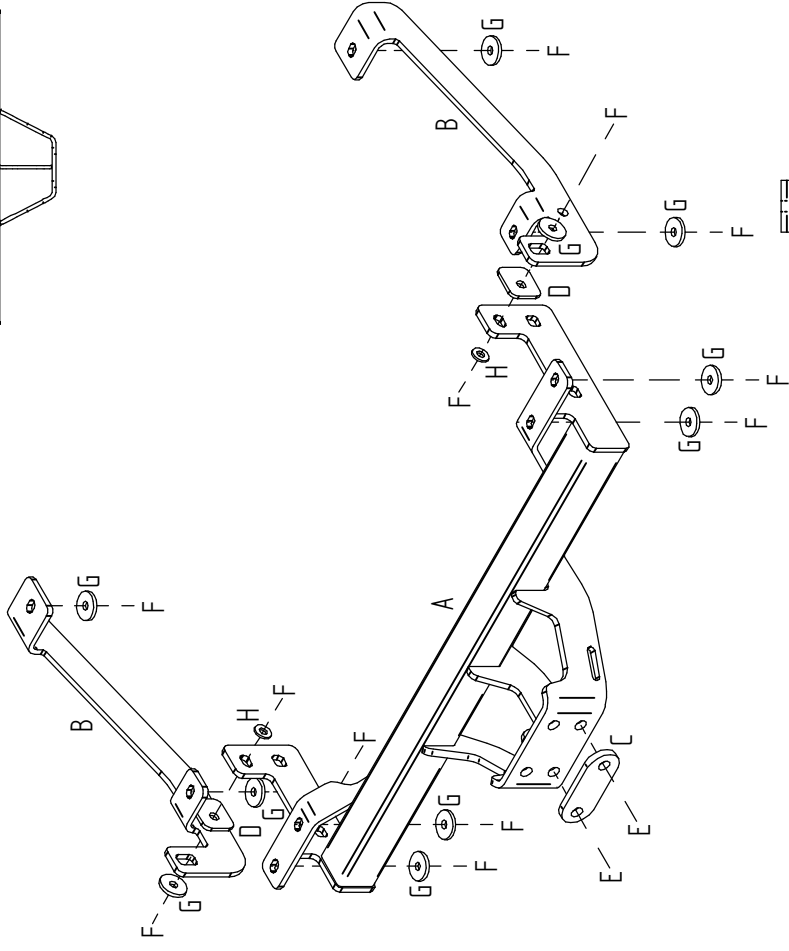
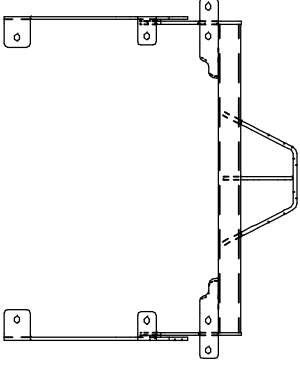
SINGLE REAR WHEEL

TR8

TWIN REAR WHEEL



STEP MOUNTS



STEP MOUNTS